

Dates To Remember

- November 1st -December: Drop off for holiday gift table items
- November 8th & 9th: Richard Harrington Workshop
- November 12th - 20th: Drop Off for White & Abstractions
- November 22-23rd: Bob Noreika Workshop
- November 24th: Annual potluck brunch 11am
Demo by Bob Noreika at 12pm
White & Abstractions opening reception 1-4pm
- November 22nd-24th: Pick up for National Show
- November 28th & 29th: Gallery Closed for Thanksgiving
- December 7th & 8th, 14th & 15th: Winter Wonderland pictures with Santa 4pm - 8pm in the RIWS Classroom.
- December 22nd-Jan 1st: Gallery Closed
- December 23rd & 30th: No Monday Night Painting



RIWS members painting at the Pawtucket Fall Arts Festival, selling artwork and spreading the word about the society.

Announcements:

- RIWS members Nina Ackmann, Robin Beckwith, Cynthia DiDonato, Sharon Eisman, Joan Kenower, Beverly Silva and Elinor Thompson have had work accepted into the 27th Annual RI Open at the Warwick Museum of Art. Cynthia's painting "Vessels" has received a Notable Works award and one of Beverly's collages has received an Honorable Mention. Congratulations to you all! This exhibit runs from October 5 - November 16 in the main gallery.
- Northwest RI Open Studios are Saturday, November 2, 2013, 10am - 4pm. RIWS member Sherri Snyder will be showing her work! For more information please visit www.artistopenstudios.org
- National Juried Exhibition: The Mitchell Gallery, St. John's College, Annapolis, MD: May 28 - June 15, 2014. Less is More: Small Works in a Great Space. Accepting entries in all media, \$2000 cash awards. Juror: Domenic Iacono. Entry cost is \$40 for up to three JPEGs. Submission deadline is January 31, 2014. The prospectus can be found at www.themitchellgallery.org/prospectus.php
- The Painting Around group, led by RIWS member Elinor Thompson will be having a show at the main branch of the Cranston Public Library November 3rd - 29th. The opening reception is Nov. 3 from 2pm to 4pm. There are over 30 artists in the show, many are RIWS members.
- Northwest Watercolor Society invites artists to enter the 74th Annual International Open Exhibition: April 19 - June 6, 2014. Anticipating \$11,000 in awards. Online entries accepted beginning October 20, 2013. Entry deadline is January 11, 2014, 6:00 PM P.S.T. The juror for this show will be Donna Zagotta. For more information please visit www.NWWS.org.
- Before the holidays make you too busy, create some items for the RIWS holiday gift table. During the weekends in December, the park hosts pictures with Santa at the RIWS gallery. Hundreds of people will be in the gallery and small home-made gift items are popular. Drop off will be Tuesday - Saturday starting November 1st and continuing through December.
- Gift Certificates are now available at the front the desk! Purchase them for friends and family members who are interested in taking classes/ workshops at RIWS or to use towards entry fees for our open juried shows.



WaterMedia

The Official Newsletter of the Rhode Island Watercolor Society
November 2013

Great Outdoors Open Juried Show Prize Winners Juror: Barbara Healy



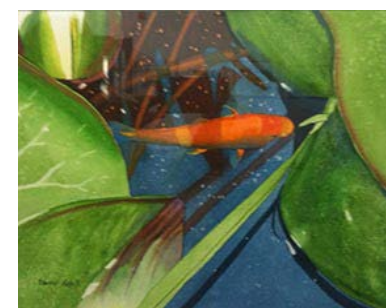
Winners at the opening reception
(from left to right)
Mary Wojciechowski, Kris Occhino, Elinor Thompson,
Al Albrektson & Yvonne Posa



1st Prize "Stillhouse Cove" Elinor Thompson



2nd Prize "Sunrise Over Grand Canyon" Yvonne Posa



3rd Prize "Peek-A-Boo Koi" Thomas Rebek

President's Corner

You really should not miss the John Singer Sargent show at the MFA in Boston.

Everyone has seen Sargent's work, but to be immersed in such a collection all at once is inspiring. And if you are like me, that inspiration gets me painting. And I never feel I paint enough, so every push back to the easel is great.

For the short time I spent last Sunday, one thing I realize is that you often forget the things you have learned. Looking at Sargent's shadows on his Quarry rocks - they are yellow, pink, blue. Even though somewhere in a class or workshop, I have seen beautiful rock

paintings, I am still making all blue shadows. Now I have yellow shadows on my mind. I can't wait to bring this back into my work and make better paintings.

Every art exhibition, art class, book, workshop can give you one small thought to carry through to your next work. So jump on the RIWS bus to Boston on the 28th, come to the National Show opening on the 27th, take a look at the RIWS library, and check out our fall workshops. In our world here at RIWS, there are so many inspirational opportunities.

RIWS President
Jackie Cannata

Director's Corner

Dear RIWS members,

November is the heart of fall, and this is the time of year when we all start to prepare for the upcoming holidays. With that said, this month is prime time to start getting your holiday cards and decorative art ready for RIWS's gift table. Let's show our visitors the scope of our members' creativity, and get those tables filled with gift items to sell for the holidays. Winter Wonderland in Slater Park takes place in the RIWS classroom during the first 2 weekends in December, and the gallery is usually flooded with families coming to take pictures with Santa. So this is an ideal opportunity to get your work seen and sold.

RIWS is also having the last two workshops of the year this month. Richard Harrington will be starting us off with his 2-day Abstract Expressionism painting workshop on Fri, Nov 8th and Sat, Nov 9th, from 9am-4pm. Bob Noreika, will also be giving a 2-day workshop toward the end of the month, called Fluid Watercolor or Acrylic, on Fri, Nov 22nd and Sat, Nov 23rd from 9am-4pm. We will also be preparing for our last Open Juried show of the year, White and Abstraction, which will be

juried by Bob Noreika. Deadline to enter is Tues, Nov 20th. This show will run from Nov 24th - Dec 21st.

Last, but not least, Sun, Nov 24th is a very busy day for RIWS members. Not only is that the opening reception for White and Abstraction, but it is also RIWS's Annual Potluck Brunch, which will be held that morning at 11am. Following the brunch, Bob Noreika will hold a one hour demo in the classroom at 12pm, which will be free for RIWS members and their guests. Starting at 1pm, the gallery will then be open to the public until 4pm for the opening reception of White and Abstraction; awards will be presented at 1pm.

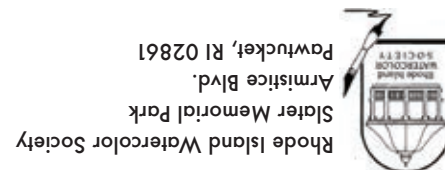
*Just as a reminder to you all... THE GALLERY WILL BE CLOSED on Thurs, Nov 28th and Fri, Nov, 29th, for Thanksgiving and Black Friday. We will resume our regular gallery hours on Sat, Nov 30th.

Happy Thanksgiving everyone!!

RIWS Gallery Director
Lori Estrella

NONPROFIT
ORGANIZATION
US POSTAGE
PAID
PAWTUCKET, RI
PERMIT #104

ADDRESS
SERVICE
REQUESTED



Rhode Island Watercolor Society
Slater Memorial Park
Armistice Blvd.
Pawtucket, RI 02861

Workshops & Classes

Monday Night Painting

Every Monday 6pm - 9pm

Members: \$5.00 Non-Members: \$8.00

Monday evenings for informal watercolor painting with Joan and Mary. No instruction, just painting with fellow artists. A critique is held around 8pm.

Monday night painting will be taking a break for the holidays. There will not be classes on December 23rd & 30th, but will resume on January 6th.

Richard Harrington Abstract Expressionism Acrylic 2 Day Workshop

Date: November 8th & 9th

Members: \$115 Non-Members: \$125 Come for One Day: \$75

Sign up deadline: November 1st

Workshop Description:

Abstract paintings will be done on watercolor paper using acrylic paints. Students may use other media as well in order to create a mixed media piece. Working in a free and easy manner, painters will use a limited palette to explore: mark-making, shapes, colors, subject matter and personal/historical references. Students will be encouraged to use their own art experiences, habits and interests to explore the way in which they paint, as well as what they paint.

Bob Noreika Fluid Watercolor or Acrylics 2 Day Workshop

November 22nd & 23rd 9am - 4pm

Members: \$150 Non-Members: \$200

Sign up deadline: November 15th

Workshop Description:

Robert Noreika is returning this fall with instruction in his signature "fluid" painting method. Students will learn to take the essence of the subject and transform it into a pleasing painting, while achieving strong cohesive value patterns with interesting shapes. Using simple palette combinations along the journey, the group will work creatively from still life and photo reference. Students of all levels will enjoy working with Robert in a structured and accommodating, yet humorous and fun atmosphere. Supply list will follow upon registration. Demos and critiques will be included daily.



"Traffic" Bob Noreika



"Convergence" Bob Noreika

Annual Potluck Brunch

Sunday, November 24th we will be having our annual potluck brunch at 11am.

Following brunch, from 12pm - 1pm, there will be a demonstration by Bob Noreika. Bob is a prominent national award winning artist and illustrator. His paintings hang in both corporate and private collections throughout the United States, Europe and Japan.



The demonstration is free for RIWS members and their guests. At 1pm the gallery will open to the public for the White and Abstraction opening reception and awards will be presented.

Winter Wonderland

RIWS will be holding an event for children during Winter Wonderland in Slater Park. As most of you know, the RIWS classroom hosts pictures with Santa every year. This event usually draws a large crowd of children with their families to our gallery, so we have decided to get more involved this year. With help from volunteers, we would like to set up a table in the Main Gallery where children can paint creations of their own, that they can make as gifts or keepsakes. We will be selling paper and blank ornaments, at the front desk, and there will be paint set up at the tables for the children to use (for free) in order to paint and decorate the ornaments they just purchased. All proceeds from the sale of paper and ornaments will be used as donations to RIWS.

We are in need of volunteers who would like to come and sit at the table with the children, to make sure that they stay focused on their projects, and help to keep order in the gallery.

If you are interested in volunteering, please contact the Gallery Director, Tues- Friday from 10am-4pm, to sign up.

Winter Wonderland Volunteer Slots Available:

Saturday, December 7th or Sunday, December 8th from 3:30pm- 7:30pm.

Saturday, December 14th or Sunday, December 15th from 3:30pm- 7:30pm.

Rhode Island Watercolor Society
Watermedia Newsletter
Published Ten Times A Year.

Officers:

President: Jackie Canna
Vice President: Don Fry
Treasurer: Dennis Finlay
Recording Sec. : Dyan Rook
Corresponding Sec: Elinor Thompson

Directors:

Nina Ackmann
Ray Annino
Paula Correia
Alyce Crowell
Jacquelyn Hayes
Sue Klas Wright

Editor:

Lori Estrella, Gallery Director
riwsgallery@gmail.com

Gallery Hours:

Tuesday - Saturday:
10am - 4pm
Sunday: 12pm - 4pm
Closed Mondays and Holidays

Deadline for Dec. Newsletter:

11/8/13

Mail news items to:
RIWS
Slater Memorial Park
Armistice Blvd.
Pawtucket, RI 02861
or email Lori Estrella at
riwsgallery@gmail.com



"New Bedford Whaleman" Mike Mazer

Featured Signature Artist Member

★ Mike Mazer ★



Since retiring in 1998 from a very fulfilling 36-year career as simultaneous Chiefs of Cardiology and Nephrology at several greater Boston-area hospitals, and a LCDR, U.S. Navy Ret., Mike has been painting professionally since 1993 having drawn and painted extensively as a child. Knowing he wanted to become an artist, he still has his portfolio with work he did early on. Over 500 of his representational maritime works have been juried into national and international exhibitions, while being the recipient of over 100 major awards.

Mike is an elected and/or signature member of 37 national art societies. These memberships include Fellowship in the American Artists Professional League, Watercolor U.S.A. Honor Society, Texas Watercolor Society's Purple Sage Brush Society, the Transparent Watercolor Society of America and the International Society of Marine Painters. He has also gained Master Artist status with the Cape Cod Art Association in Massachusetts, and is among the first members of that Association to do so. While serving two terms as President of the New England Watercolor Society, Mike established the Society's first home Gallery since the Society's inception in 1885 on Newbury St. in Boston. He was Educational Program Director for 10 years for the Canton Art Association in Canton, Mass.

Mike Mazer's painting "Tied Up" has just returned from a two-year tour of eight museums across the country with the American Society of Marine Artists. He is currently exhibiting two of his paintings in the 20th Anniversary Marine Art Show at the Coos Art Museum in Coos Bay, Oregon and was the recipient of awards at both the North Shore Arts Association in Gloucester and the Arts Affair at Marina Bay in Quincy. Mike was requested by the University of Mass Press to allow the image of his painting "New Bedford Whaleman Statue" to be used as the cover image for their new book published this August titled: "A Bold and Hardy Race of Men: The Lives and Literature of American Whalers". It is available now in book stores and on Amazon. The original painting is in the collection of the New Bedford Free Public Library. This year the Cape Cod Art Association in Barnstable established a new Master Artist category and Mike was one of the first artists to be designated with that status.

Visit his website to see more work www.MikeMazer.com

Exhibitions

20th Annual National Watermedia Competition and Show

October 27th - November 21st

Juror: Barbara Nechis

Opening Reception: Oct. 27th 1-4pm

Pick up begins November 22nd



Barbara Nechis at her workshop held at RIWS



Ruth Findley Memorial Award "Alicia" Joan Murphy



Ruth & Wm Findley Memorial Award "Road Less Traveled" Richard Harrington

Upcoming Exhibitions:

White and Abstractions

Open Juried Show

November 24th - December 22nd

Medium: All 2D Media and Collage

Juror: Bob Noreika

Drop off: November 12th - 20th

Pick up for unaccepted work: Nov. 22nd - 24th

Opening Reception: Nov. 24th 1 - 4pm

Pick up begins January 3rd

**Please read the prospectus, some changes have been made for this show.*

New Artist & Signature Artist Show

January 12th - February 6th

Medium: All 2D Media and Collage

Drop off: January 7th - 10th

Opening Reception: Jan. 12th 1- 4pm

Pick up begins February 7th

1st Open Juried Show - TBA

February 9th - March 6th

Our exhibition committee is currently working on themes for the shows.

Member Group Show Opportunities

Exhibition dates:

March 9th - March 27th

May 1st - May 15th

June 15th - July 10th

October 5th - October 23rd

If you are interested in being a part of a group show please call the gallery to sign up for one of the dates above.

• The Great Outdoors Honorable Mentions •



"River's Edge" Mary Wojciechowski



"Sneak Peak" Kris Occhino



"Maine Coast" Al Albrektsen