

## Dates To Remember

March 1st: Email submission information on work being entered into Associate Member Show  
 March 1st - 6th: Drop off for Associate Member Show  
 March 7th - 9th: Pick up for Space  
 March 9th: Associate Member Show opening reception 1-4pm  
 March 18th - 23rd: Drop off for Artist Member Show  
 March 25th - 28th: Sign up deadlines for spring classes  
 March 30th: Opening Reception for 118th Annual Artist Member Show & Annual Member Meeting and Potluck Brunch 11am - 1pm.

## Announcements

- RIWS member Aivars Zandbergs is having a one man exhibition of his watercolors and acrylics at Coffee Sensations on Rt.109, 116 Main Street Medway, MA. The exhibition will be up through February and March. Hours: Mon - Sat. 6am - 4pm Sun. 7am - 3pm.
- **Need to order art supplies?** RIWS has become an affiliate member of Blick. Anytime some one clicks on the link in the email blasts or on our website and places an order, Blick will give a percentage to RIWS. This is a great way to help us raise money without any extra cost to you! 
- **"Art by the Dozen" group show featuring work by some of RIWS' members!** Twelve artists will exhibit their artwork at the Spring Bull Galley, located at 55 Bellevue Ave., in Newport, RI. The show will be on display through April, the opening reception is April 5th from 5 to 7 pm. Exhibiting Artists: Jerry Aissis, Robin Beckwith, Carole Berren, Adele Corrigan, Dot Downing, Paul Eddy, Bill Lane, Kris Occhino, Wayne Peltier, Frank Robertson, Colleen Vandeventer and Robin Wessmen.
- **Call for entries!** The 41st Annual Rocky Mountain National Watermedia Exhibition will be accepting submissions until May 12, 2014 (mailed in) May 26, 2014 (online). Visit [www.foothillsartcenter.org](http://www.foothillsartcenter.org) for more info.
- **Need help preparing your images for digital entries?** Visit [www.nationalwatercolorociety.org](http://www.nationalwatercolorociety.org) and click on the "Digital Image Preparation Instructions" tab to see step by step instructions.
- **RIWS member Carole Berren will be doing a demo at FAA on March 5th.** Carole's students will be exhibiting their work at the Cranston Public Library, the show will run through April, the opening is April 6th. Her work, "Going Home" has won an honorable mention at the Newport members show. In addition she has been invited to teach in CT in Sept.
- **RIWS member, Cathy Mansell will be exhibiting at the Hoxie Gallery in Westerly, RI March 5th-29th.** Opening reception March 5th 5-7:30pm



# WaterMedia

The Official Newsletter of the Rhode Island Watercolor Society  
 March 2014

## President's Corner

The first two openings of the year have really been great. As with every opening, I always learn something while chatting with members and guests.

While enjoying the variety of an "any media" show and recognizing the versatility of our members, I met two new members who joined RIWS because we are a watercolor society. Good point. We are the Rhode Island Watercolor Society - one of the oldest watercolor societies in the country. And it is an honor.

Every April, we showcase the our artist members in the Annual Artist Member exhibition. Just think of our gallery with all

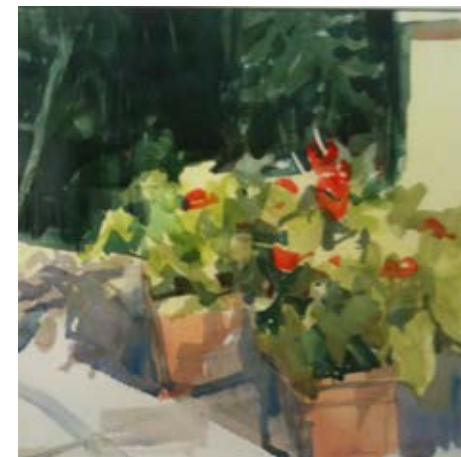
that watercolor talent. And all this art will surround us during our annual meeting.

At the annual meeting, we evaluate last year and collaborate on what we can do next year. It is the time to see how we can develop our society into the gallery, showcase, and learning center that we know it can be.

Artist members, bring in a painting. Everyone, come to the meeting. Enjoy watercolor. Enjoy RIWS.

RIWS President  
 Jackie Canna

*Congratulations to the award winners of Space!*



1st Prize  
 Botanical Garden I by Cathy Chin



2nd Prize  
 Keep Out by Becky Haletky



3rd Prize  
 Good Surf Day by Priscilla Malone

## Director's Corner

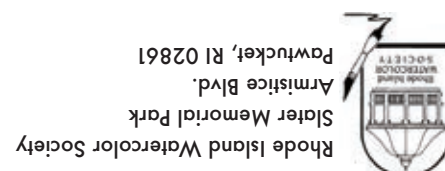
March is here and I am happy to announce that the Rhode Island Watercolor Society's Associate Members will be kickstarting this month with an exhibition of their work. This show opens on March 9th and will run through March 27th. Please come and celebrate our Associate members at the opening reception of this show on Sun, March 9th from 1-4pm. \*Please note: Daylight savings time also begins on March 9th! Don't forget to turn your clocks ahead 1 hour the night before, or you'll be late for the reception!

I would also like to remind all of our Artist and Signature members that the end of this month will be the Rhode Island Watercolor Society's 118th Annual Artist's Member Show! Every year, RIWS celebrates its Artist and Signature Members with this exhibition, which showcases their art, so if you are an Artist or Signature member, please do not forget to drop off a peice for this show! Drop off is from March 18th-

23rd, and the show will run from March 30th - April 24th. I would also like to remind everyone that the RIWS Annual Member Meeting and Potluck Brunch will take place in the Classroom Gallery on Sunday, March 30th from 11am-1pm, the same day as the opening reception of the Annual Artist Member Show, which is from 1-4pm- after the meeting.

Deadlines for Spring Classes and workshops are approaching at the end of this month! Richard Harrington will be giving a 2-day Monotype workshop early in April using oil and water based ink. Take it for one day using your medium of choice, or take it for two days and try both! Kris Occhino and Ben Macomber will also be returning this Spring to teach their watercolor painting classes starting in April. Space is still available for all classes and workshops. Please visit our website, or check the classes and workshops section of this newsletter, for more details!

Lori Estrella  
 Gallery Director



NONPROFIT ORGANIZATION  
 US POSTAGE PAID  
 PAWTUCKET, RI  
 PERMIT #104  
 ADDRESS SERVICE REQUESTED

## Workshops & Classes

### Monday Night Painting

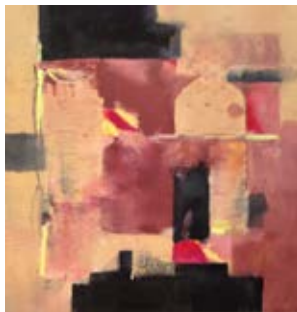
Every Monday 6pm - 9pm

Members: \$5.00 Non-Members: \$8.00

Monday evenings for informal watercolor painting with Joan and Mary. No instruction, just painting with fellow artists. A critique is held around 8pm.



"Nature's Majesty" Kris Occhino



"A Moment In Time" Richard Harrington

### Creating Dramatic Coastal & Landscape Scenes Six Week Class with Kris Occhino

*Advanced Beginner - Intermediate Level*

Date: April 3rd - May 8th Thursdays, 10am - 12:30pm

Members: \$ 95 Non-Members: \$ 120

**Sign Up Deadline: March 27th**

In this course, students will be given some tips on how to put more drama into their work through the use of light, color and composition. The instructor will provide the photographic images for the first class and assist with others. There will be a demo done at each class.

### Stephen Quiller Five Day Workshop at RIWS

October 13th - Oct 17th, 2014

Monday through Friday from 9am - 4pm

Members: \$500 Non-Members: \$600

#### Workshop Description:

The emphasis of this workshop will be color and watermedia. Stephen Quiller will work primarily with watercolor and with some opaque gouache the first three days of the seminar and emphasize color relationships, mixing, and harmony. The last two days he will use acrylic in a watermedia approach while still emphasizing color. However, painters can work with watercolor and a tube of white gouache and get by for the entire week or use any of the other watermedia for the week. Steve's two books on color, "Color Choices" and "Painter's Guide to Color" as well as his new book "Water Media Painting with Stephen Quiller" will be used for reference.

### Splendors of Watercolor: A Refresher Course, Beginners Welcome! with Ben Macomber

Date: April 1st - May 6th Tuesdays 6pm - 8:00pm

Members: \$ 60 Non-Members: \$ 100

**Sign up deadline: March 25th**

Has it been a few years since you picked up a paintbrush? Are you a painter who wishes to try the medium of watercolor, but would like a little guidance? Or maybe you have never painted at all, but have always wanted to...

In this class, the instructor will demonstrate the various techniques of working in watercolor and introduce his students to the characteristics of watercolor, application of paint and drying times. There will be a focus on composition, value, style and focal point. The instructor will seek to enhance each student's individual painting styles and skill level. Ben Macomber is a Continuing Education Instructor at RISD and also teaches at the Taunton Art Association.

### Two Day Monotype Workshop with Richard Harrington

Date: April 4th & 5th 9am - 4pm

Friday, April 4th: Oil Based Monotype

Saturday, April 5th: Watercolor Based Monotype

Both Days: Members: \$190 Non-Members: \$ 220

One Day: Member: \$ 100 Non-Member: \$120

*\* Prices include a \$40 materials fee*

**Sign Up Deadline: March 28th** Space is limited to 10 students a day

Monotypes are paintings done on a prepared Plexiglas plate using watercolor, oil or printing inks. A damp piece of paper is placed over the plate and put under pressure through a print press. The pressure forces the image to be transferred from the plate to the paper (in reverse). The plate sometimes retains a very light image of the design and a second (ghost) image can be pulled. The artist can then choose to add more paint to revise the design, paint directly on the monotype with pencils, pastels, etc. or clean the plate and develop a new image.



"Pilgrimage with Sunflowers" Stephen Quiller

### Honorable Mentions for Space

Juror: Kathy Weber



In the Chill of the Day by Mary Wojciechowski



Many Moons by Evelyn Bernal



Inner Space, Looking Within Myself by Elinor Thompson

## Exhibitions

### Current Exhibition:

#### Space

*e.g. outer space, negative space, your favorite space*

**Open Juried Show: All 2D Media & Collage**

February 9th - March 6th

Juror: Kathy Weber

Pick up begins March 7th

### Upcoming Exhibitions:

#### Member Group Show:

**Elaine Gauthier, Linda Littleton**

**& Diane Taylor**

April 27th - May 15th

Drop Off: April 22nd - 25th

**Opening Reception:** April 27th 1-4pm

Pick Up: May 16th - 18th

#### Reflections

**Open Juried Show: All 2D Media & Collage**

May 18th - June 12th

Juror: TBA

Drop Off: May 6th - 11th

**Opening Reception:** May 17th 4 - 7pm

Pick Up: June 13th - 15th

**Member Group Show Opportunities Still Available:**

- June 15th - July 10th *with Alyce Crowell*
- October 5th - October 23rd

*Contact the gallery if you would like to show!*

### March Exhibitions:

#### Associate Member Show

March 9th - 27th

Drop Off: March 1st -6th

**Opening Reception:** March 9th 1-4pm

Pick up begins March 28th

#### 118th Annual Artist Member Show

March 30th - April 24th

Drop Off: March 18th - 23rd

Entry is free. Each Artist Member may enter 1 painting, watermedia only.

**Opening Reception:** March 30th 1-4pm

Pick Up: April 25th - 27th

### Annual Member Meeting & Potluck Brunch Sunday, March 30th

**11:00 am** Potluck bunch

**11:30 am** Annual Meeting to include:

- 2013 Treasurer's Report
- Committee & gallery reports
- 2014 Board nomination
- 2014 Outlook and Plans

**1:45 pm** Annual Artist Member Show Awards

*This is a great opportunity to share your thoughts and ideas on the Society. We hope you will join us!*

#### 2014 Proposed Board

*President:* Jackie Canna

*VP:*

*Treasurer:* Dennis Finlay

*Recording Secretary:* Dyan Rook

*Corresponding Secretary:* Elinor Thompson

*Directors:* Nina Ackmann, Paula Correia, Alyce Crowell, Jacquelyn Hayes, Sue Klas Wright

*There is one vacancy for a Director*

## Featured Signature Artist Member

### ★ Yale Nicolls ★



Yale lives and paints in Wellesley, MA. She came to painting fairly late, starting watercolor classes at the Danforth Museum School in the fall of 2001. Growing up on the coast of Long Island Sound, the water has long been her favorite subject. "I especially like painting water. It is exciting to capture the reflections with their brilliant colors and abstract shapes, and to uncover what is hidden beneath. One of my greatest joys is to go to the coast, with camera in hand, to find inspiration in the beauty that is all around."

After traveling around the country competing in tennis tournaments and then playing for the University of Southern California, Yale graduated from Barnard College with a BA in Philosophy. She married her husband Jim and moved to California, then Maryland and finally settled in Wellesley, where they raised their five children. Living so near the coast of New England, day trips to the water have been something she treasures. "I love to go to the coast and spend a few hours just taking in the beauty. I then try to capture those experiences on paper, with watercolor, using many layers to create the feeling of depth and glow of color."

Though water may be her favorite subject to paint, she finds inspiration in many things--flowers and animals included.

Yale has participated in many juried shows throughout the New England area. She is the current president of the Wellesley Society of Artists, a signature member of RIWS and a signature member of NEWS.

In addition to painting in her studio ( kitchen) at home, Yale paints weekly in Natick with the Watercolor Connection, a group of painters devoted to the fabulous medium of watercolor.



Rhode Island Watercolor Society  
Watermedia Newsletter  
Published Ten Times A Year.

### Officers:

President: Jackie Canna  
Vice President: Don Fry  
Treasurer: Dennis Finlay  
Recording Sec.: Dyan Rook  
Corresponding Sec: Elinor Thompson

### Directors:

Nina Ackmann  
Paula Correia  
Alyce Crowell  
Jacquelyn Hayes  
Sue Klas Wright

### Editor:

Lori Estrella, Gallery Director  
riwsgallery@gmail.com

### Gallery Hours:

Tuesday - Saturday:  
10am - 4pm  
Sunday: 12pm - 4pm  
Closed Mondays and Holidays

### Deadline for March Newsletter:

3/11/14

Mail news items to:  
RIWS  
Slater Memorial Park  
Armistice Blvd.  
Pawtucket, RI 02861  
or email Lori Estrella at  
riwsgallery@gmail.com