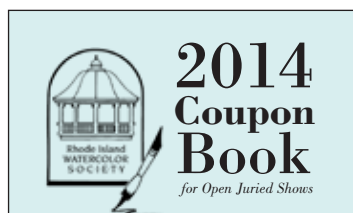


## Dates To Remember

- January 28th - Feb. 2nd: Drop off for Space
- February 9th: Space opening reception 1 - 4pm
- February 6th: Accepted paintings announced
- February 6th - 9th: Paintings not accepted must be picked up
- March 7th - 9th: Accepted work must be picked up
- March 9th: Member Group Show opening reception 1-4pm



For sale at the gallery, \$40.00 each.  
This coupon allows you to enter one painting for free to this exhibition. There will be a \$10 charge for a 2nd entry and a \$5 charge for a 3rd.

## Announcements

- Gail Armstrong, Craig Masten, husband and wife signature artist members of RIWS along with fellow RIWS artist member Susan Shaw will be having a three person show at the main Maxwell Mays Gallery of the Providence Art Club this January 26-February 14, 2014 with an opening reception on Sunday, January 26, 2-4 PM at the gallery.
- Attleboro Arts Museum call for artists Exhibition of Nature-themed Artwork: Open to all original visual expressions of the natural world: floral, landscape, underwater, weather, wildlife, extinct species, insects, etc. All media can be submitted. See more details and other exhibition opportunities at [attleboroartsmuseum.org](http://attleboroartsmuseum.org).
- Call for artists: Arts on the Common, juried handcrafted fine arts in Wrentham, MA, Saturday May 31, 2014. For more information go to [www.wrentham.ma.us](http://www.wrentham.ma.us) and click on the Living and then Culture Council tab.
- Sketchbook Workshop & Tour: Venice, Paris and London with Charlene Freeman of NWWWS, 9/1/14 - 9/10/14. Visit her website [www.charlenecollinsfreeman.com](http://www.charlenecollinsfreeman.com) for more information about this trip.



# WaterMedia

The Official Newsletter of the Rhode Island Watercolor Society  
January / February 2014

## President's Corner

2014 What a great place to start - the "New Artist and New Signature Artist" show. It was an exciting opening. Congratulations to you all. I would also like to say thank you.

Thank You:

- To the artists for entering the shows and striving to achieve your membership level at RIWS.
- To Lori, our Gallery director for organizing the show.
- To our gallery assistant, Brittany, for creating such a lovely program to recognize our artists.
- To the board for providing the refreshments.
- To Paula, our hospitality chair, who coordinates and works at all of our receptions.
- To our wonderful hanging committee, who spends a Saturday morning once a month creating a showcase for us all to enjoy.

And thank you to our all our members, families, and patrons who attended this and all of our openings throughout the year.

Rhodes Island Watercolor Society is an organization which requires Art, Artists, and lots of support. In 2014, we want to offer more opportunities for our artists, larger awards for show participants, have more events for our members to enjoy. And we cannot do it without your help. Along with gallery support, we really need the help with fundraising, grants, and attracting sponsors.

Please help us make 2014, "The year of the volunteer".

Thank you.

RIWS President  
Jackie Cannata

## Director's Corner

Happy New Year!

I hope you're all ready to help make 2014 a great year!

We've already started off this year with a beautiful show in January, which features the work of the Rhode Island Watercolor Society's new Artist and Signature members. These members achieved their new member status in 2013 and are showcasing their work in the gallery until February 6th. If you have not yet seen this show, I highly recommend stopping by and seeing their work. Congratulations, again, to all of our new Artist and Signature members!

February will feature our first open juried show of the year, called Space. I would like to encourage all of our members to enter into this show and kick start the year with a wonderful new exhibition. Who knows, maybe acceptance into this show will catapult you into Artist Membership! This is a playful theme which is open to all 2-D media, and allows you to visit your inner space, explore the elements of outer space, or the simple beauty of a spatial study. Go ahead and have fun with it! The prospectus is now available. Deadline is February 4th! 2014 coupons are available for purchase at the front desk, for more member discounts!

I am very happy to see many of our members renew for 2014, as well as to welcome all of our new members to the Rhode Island Watercolor Society. Your membership is what makes our Society so special, so I would also like to thank all of you for your continued support. I would also like to thank those of you who donated financially and/or signed up to volunteer at RIWS in 2014. I am looking forward to working with many of you again, as well as for the first time, in some cases. We have a lot planned for this year, and your assistance is greatly appreciated. The gallery is still in desperate need of Sunday gallery sitters. So far, I only have 6 members who have signed up, and it is crucial that we have more in order to keep the gallery open on Sundays. This is a short day, from 12pm-4pm, and is usually a leisurely day where you have the opportunity to chat with visitors about art and what we do here. Sunday volunteers are also welcome to bring a guest with them to keep them company throughout the day. If you have time and are interested in volunteering as a Sunday gallery sitter, please contact the gallery, we would love to have you!

Lori Estrella  
Gallery Director



Some of our new Artist & new Signature members at the opening reception.

Left to right: Carol Flagg, Eileen McAllister, Stephen Ellery Manning, Russell Neville, Sally Meding, Naoko Kanno-Nagl, Linda Porreca, and Donna Kenny Kirwan



Stephen Quiller will be our juror for RIWS' 2014 Regional Watermedia Competition. He will also be teaching a five day workshop this fall.



Richard Harrington will be teaching a two day Monotype workshop at RIWS! Above is a picture of his students and their prints during the workshop last year.



Photos from the opening reception of the New Artist and Signature Member Exhibition

NONPROFIT  
ORGANIZATION  
US POSTAGE  
PAID  
PAWTUCKET, RI  
PERMIT #104  
ADDRESS  
SERVICE  
REQUESTED

Rhode Island Watercolor Society  
Slater Memorial Park  
Armistice Blvd.  
Pawtucket, RI 02861



## Workshops & Classes

### Monday Night Painting

Every Monday 6pm - 9pm

Members: \$5.00 Non-Members: \$8.00

Monday evenings for informal watercolor painting with Joan and Mary. No instruction, just painting with fellow artists. A critique is held around 8pm.

### Coming This Spring . . .

#### Splendors of Watercolor: A Refresher Course, Beginners Welcome! with Ben Macomber

Date: April 1st - May 6th Tuesdays 6pm - 8:00pm

Members: \$ 60 Non-Members: \$ 100

Sign up deadline: March 25th

Has it been a few years since you picked up a paintbrush? Are you a painter who wishes to try the medium of watercolor, but would like a little guidance? Or maybe you have never painted at all, but have always wanted to...

In this class, the instructor will demonstrate the various techniques of working in watercolor and introduce his students to the characteristics of watercolor, application of paint and drying times. There will be a focus on composition, value, style and focal point. The instructor will seek to enhance each student's individual painting styles and skill level.

Ben Macomber is a Continuing Education Instructor at RISD and also teaches at the Taunton Art Association.



"Morning Drama" Kris Occhino

#### Creating Dramatic Coastal & Landscape Scenes Six Week Class with Kris Occhino

Advanced Beginner - Intermediate Level

Date: April 3rd - May 8th Thursdays, 10am - 12:30pm

Members: \$ 95 Non-Members: \$ 120

Sign Up Deadline: March 27th

In this course, students will be given some tips on how to put more drama into their work through the use of light, color and composition. The instructor will provide the photographic images for the first class and assist with others. There will be a demo done at each class.

#### Two Day Monotype Workshop with Richard Harrington

Date: April 4th & 5th 9am - 4pm

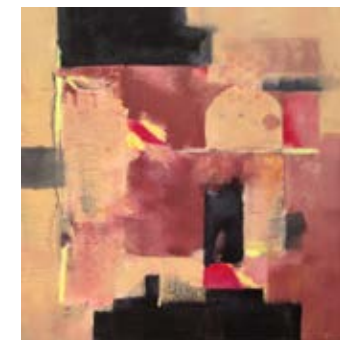
Friday, April 4th: Oil Based Monotype Saturday, April 5th: Watercolor Based Monotype

Both Days: Members: \$190 Non-Members: \$ 220

One Day: Member: \$ 100 Non-Member: \$120 \*Prices include a \$40 materials fee

Sign Up Deadline: March 28th Space is limited to 10 students a day

Monotypes are paintings done on a prepared Plexiglas plate using watercolor, oil or printing inks. A damp piece of paper is placed over the plate and put under pressure through a print press. The pressure forces the image to be transferred from the plate to the paper (in reverse). The plate sometimes retains a very light image of the design and a second (ghost) image can be pulled. The artist can then choose to add more paint to revise the design, paint directly on the monotype with pencils, pastels, etc. or clean the plate and develop a new image.



"A Moment In Time" Richard Harrington

### Stephen Quiller Workshop at RIWS in October 2014!

October 13th - Oct 17th, 2014

Monday through Friday from 9am - 4pm

Members: \$500 Non-Members: \$600

#### Workshop Description:

The emphasis of this workshop will be color and watermedia. Stephen Quiller will work primarily with watercolor and with some opaque gouache the first three days of the seminar and emphasize color relationships, mixing, and harmony. The last two days he will use acrylic in a watermedia approach while still emphasizing color. However, painters can work with watercolor and a tube of white gouache and get by for the entire week or use any of the other watermedia for the week. Steve's two books on color, "Color Choices" and "Painter's Guide to Color" as well as his new book "Water Media Painting with Stephen Quiller" will be used for reference.



"Pilgrimage with Sunflowers" Stephen Quiller

\* Please note that prices have gone up so we are able to pay our instructors more in the new year.



## Exhibitions

### Current Exhibition:

#### New Artist & New Signature Member Exhibition

January 12th - February 6th

Pick up begins February 7th

Featuring Work By New Artist Members: Jane M. Bailey, Carol Flagg, Naoko Kanno-Nagl, Stephen Ellery Manning, Eileen McAllister, Sally Meding, Russell Neville, Denise Petrin, Yvonne Posa, Beverly Silva  
New Signature Members: Brenda Bechtel, Donna Kenny Kirwan, Eva-Lyn Loy, Linda Porreca, Kristin Stashenko

### Upcoming Exhibitions:

#### Space

e.g. outer space, negative space, your favorite space

Open Juried Show: All 2D Media & Collage

February 9th - March 6th

Juror: Kathy Weber

Drop Off: January 28th - February 2nd

Opening Reception: February 9th 1-4pm

Pick Up: Feb. 28th - 30th

#### 118th Annual Artist Member Show

March 30th - April 24th

Drop Off: March 25th - 28th

Opening Reception: March 30th 1-4pm

Pick Up: April 25th - 27th

#### Reflections

Open Juried Show: All 2D Media & Collage

May 18th - June 12th

Juror: TBA

Drop Off: May 6th - 11th

Opening Reception: May 18th 1-4pm

Pick Up: June 13th - 15th

### Member Group Show Opportunities:

#### Exhibition dates:

March 9th - March 27th

April 27th - May 15th

June 15th - July 10th

October 5th - October 23rd

### Call For Artist & Signature Artist Members!

March is slated for the first Member Group Show of 2014. RIWS Member Group Shows, are opportunities open to RIWS Artist and/or Signature members, to rent gallery space for a group show. You can get together with other members and apply as a group, or you can apply on your own and be placed in a show with other members who have applied for that time slot. Depending on the number of artists scheduled, each artist can show anywhere from 6-10 pieces of original artwork. You may also incorporate gift items for sale, such as cards and/or crafts. Member Group Shows are \$125 per artist, with a \$75 refundable fee, after fulfilling all commitments for your show, including one Sunday gallery sitting commitment in 2014, most preferably during your exhibition.

As of January 24th, we still do not have enough people to move forward with a Member Group Show in March. If you are an Artist or Signature member and you are interested in having a show in March, please contact the gallery director via email or by phone, by February 7th. If we do not have 4 members signed up for a show in March, RIWS will be changing the exhibition schedule and this opportunity to show will no longer be available in March.

## Featured Signature Artist Member



"Tea Time" Daydre Hamilton

### ★ Daydre Hamilton ★

Local artist, Daydre Hamilton, was born in Marblehead, MA. She has been a resident of Franklin, MA for 26 years.

Daydre majored in Art at Endicott College specializing in pottery, later expanding into sculpting clay ornaments before finding her way to watercolors.

She is a member of the Franklin and Foxboro Arts Associations as well as a Signature Member of the Rhode Island Watercolor Society. Her award winning work has appeared at various galleries and shows throughout New England.

Visit her website: [Daydre-Hamilton.artistwebsites.com](http://Daydre-Hamilton.artistwebsites.com)

[daydrehamilton@comcast.net](mailto:daydrehamilton@comcast.net)

Rhode Island Watercolor Society  
Watermedia Newsletter  
Published Ten Times A Year.

### Officers:

President: Jackie Canna  
Vice President: Don Fry  
Treasurer: Dennis Finlay  
Recording Sec.: Dyan Rook  
Corresponding Sec: Elinor Thompson

### Directors:

Nina Ackmann  
Ray Annino  
Paula Correia  
Alyce Crowell  
Jacquelyn Hayes  
Sue Klas Wright

### Editor:

Lori Estrella, Gallery Director  
[riwsgallery@gmail.com](mailto:riwsgallery@gmail.com)

### Gallery Hours:

Tuesday - Saturday:  
10am - 4pm  
Sunday: 12pm - 4pm  
Closed Mondays and Holidays

### Deadline for March Newsletter:

2/10/14

Mail news items to:  
RIWS  
Slater Memorial Park  
Armistice Blvd.  
Pawtucket, RI 02861  
or email Lori Estrella at  
[riwsgallery@gmail.com](mailto:riwsgallery@gmail.com)



"The Docks" Daydre Hamilton